

TECHNOMIG 243 WAVE



DESCRIPTION

Microprocessor controlled MIG-MAG/FLUX/BRAZING/MMA/TIG DC-Lift inverter multiprocess welding machine.

It is particularly suitable for use in body shops and allows the immediate use of three different torches. This feature enables the user to work directly on different materials without any need to change either the torch or the wire spool (3 coil storage: 1/5 kg max and 2/15kg max).

Each torch can be dedicated to welding specific materials such as steel, high resistance steel (HSS), stainless steel, aluminium and brazing of galvanised metal sheets (AB Pulse).

The WAVE OS system makes welding operations: customisable to suit customer-specific requirements; traceable and analysable, by saving data via USB; simplified, thanks to SYNERGIC adjustment of parameters and the presence of specific programs for the materials to weld (pulsed for aluminium, with low thermal transfer for thin surfaces).

Features:

- 55 customisable programs
- continuous and pulsed functioning
- 3 torches always ready for use
- user-friendly interface with TFT colour screen
- WAVE OS operating system with pulsed welding programs for specific materials (AB Pulse for aluminium and galvanised sheet metal) and low thermal transfer for thin materials (ATC).

Complete with 2 MT15 torches, 1 MT25 torch, cable and earth clamp.



TECHNICAL DATA

CODE	CODE 816066	V_{1PH}	SINGLEPHASE MAINS VOLTAGE 230 V	F	MAINS FREQUENCY 50 / 60 Hz
A_{MIN} MAX DC	CURRENT RANGE IN DC 20 - 220 A	A_{MAX} 40°C DC	MAX CURRENT DC EN60974-1 180 @ 20% A	A_{60%} 40°C DC	DC CURRENT AT 60% 100 A
V₀ DC	MAX NO LOAD VOLTAGE IN DC 96 V	A_{MAX}	MAX ABSORBED CURRENT 32 A	A_{60%}	ABSORBED CURRENT AT 60% 16 A

P_{MAX} MAX ABSORBED POWER
5 kW

P_{60%} ABSORBED POWER AT 60%
2,3 kW

η EFFICIENCY
84 %

φ POWER FACTOR(cosphi) (cosphi)
0,7

**∅_{MIN}
MAX
DC** D.USABLE ELECTRODES IN DC
1,6 - 4 mm

ST STEEL WELDING WIRE DIAMET.
0,6 - 1 mm

SS INOX WELDI.WIRE DIAMETER
0,8 - 1 mm

AL ALUM. WELDING WIRE DIAM.
0,8 - 1,2 mm

FX FLUX CORED WELDI.WIRE DIA.
0,8 - 1,2 mm

BZ BRAZING WIRE DIAM.
0,8 - 1 mm

IP PROTECTION DEGREE
IP23

LxWxH DIMENSIONS (LxWxH)
87 x 53 x 166,5 cm

kg WEIGHT
59 kg

SUPPLIED ACCESSORIES



MT15 MIG TORCH 3M (RED)
742180



MT15 MIG TORCH 3M (BLUE)
742944

FEED ROLL 4R 0,6FE-0,8/0,9FE "P-K"
742576

ON REQUEST ACCESSORIES



MT25 CONTROL MIG TORCH
3M
742777



MMA WELDING KIT 300A 25 MMQ
4+3M AX50
801081



ARGON GAS BOTTLE IT ADAPTOR
432036



ST26V TIG TORCH AX50 4M
742058



KIT 10 CERIU-TUNGSTEN ELECTR.
D.1 MM
802220



KIT 10 CERIU-TUNGSTEN ELECTR.
D.1,6 MM
802222



KIT 3 ELECTRODE HOLDER CLAMPS
D.1 MM
802223

KIT 3 ELECTRODE HOLDER CLAMPS D.1,6 MM ST9V
802225



KIT 3 ELECTRODE DIFFUSERS D.1,6
MM ST9V
802228



KIT 10 CERAMIC NOZZLES
NR.5
802230



KIT 10 CERAMIC NOZZLES
NR.6
802231



TIG RODS 308L 1.6X500
0.5kg
804364



TIG RODS 308L 2.0X500
0.5kg
804365



THIN HEADED NOZZLE
TW160-180,MT15,SP.GUN
722151



CONTACT TIP D. 0,6 MM FE
722415



CONTACT TIP D. 0,8 MM FE
M6
722416



CONICAL NOZZLE TW 160-180,
MT15,SPOOLGUN
722423



WIRE GUIDE HD.SE D. 0,6-0,8 MM 3
M BLUE
722437



CONTACT TIP D. 1 MM AL/FLUX
M6
722552



CONTACT TIP D. 1,2 MM
AL/FLUX M6
722553



CONTACT TIP D. 0,8 MM
AL/FLUX
722556



CYLINDRICAL NOZZLE MT25
722684



SPOT WELDING NOZZLE D. 18
MM
722687



WIRE GUIDE HOSE D. 1,0-1,2-3 M
RED
722689



NOZZLE SPRING MT25
722690



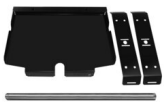
SWAN NECK MT25
722696



CONTACT TIP D. 1 MM FE M6
L=25MM
722705



ALUMINIUM WELDING KIT D. 1-
1,2 MM
802663



TWO GASBOTTLE HOLDER KIT
803067



CONTACT TIP D. 0,8 MM M6
722680



CONTACT TIP D. 1 MM FE M6
L=28MM
722681



CONTACT TIP D. 1,2 MM FE
722682



CONICAL NOZZLE MT25
722685



THIN HEADED NOZZLE MT25
722686



GAS DIFFUSER MT25
722688



CONICAL NOZZLE MT36
722792



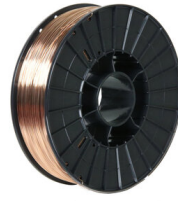
THIN HEADED NOZZLE MT36
722793



SPOT WELDING NOZZLE
722794



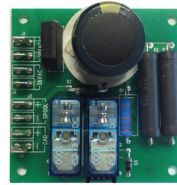
STEEL WIRE COIL 0,6 MM 5
KG
802395



STEEL WIRE COIL 0,8 MM 5
KG
802396



ELECTRODE HOLDER + CABLE
25MMQ 4M AX50
804123



PUSH PULL BOARD KIT
982219



WIRE GUIDE HOSE Ø 1.0-1.2 4M
AL
742984



ARGON GAS BOTTLE GB-AU ADAPTOR
432102



ARGON GAS BOTTLE DK-N-NL-S-SF ADAPTOR
432160



GAS REGULATOR 2 MANOMETERS
12 L/min
722119



QUICK GAS CONNECTOR
804208

DOWNLOAD



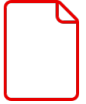
CATALOG IMAGE



INSTRUCTION MANUAL



SPARE PARTS LIST



SOFTWARE/APP